

GigE-Connect-FCB-BOX

GigE-Vision add-on kit for
SONY FCB-H10 / FCB-H11
Color Camera Modules

Sony High-Definition
FCB-H10 Inside



NEW



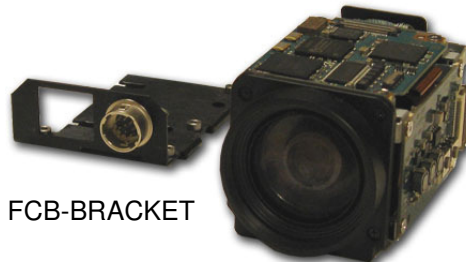
GigE-Connect-FCB-BOX

NEW



FCB-BRACKET

FCB-H10 / FCB-H11



NEW



GigE-Connect-FCB
(GigE-Vision Engine)

GIGE-FCB-BOX

High Definition Gigabit Ethernet Camera

- 1/3" HD 2Mega-Pixel CMOS sensor
- Based on the Sony High-Definition FCB-H10 Color Camera Module
- 30 frames/second at 720p, 1080i resolution
- 120x Zoom Ratio (10x Optical + 12x Digital) The FCB-H10 incorporates a 10x motorized optical zoom lens, achieving an outstanding zoom having the capability of up to 120x when used in combination with its 12x digital zoom.
- Fully motorized auto focus
- GigE Vision interface with 8 bit mono or 16 bit color YUV4:2:2 output
- Camera control performed by VISCA protocol over GigE-Vision
- No compression over the Ethernet, real image readout
- GigE-Vision to general purpose RS232 channel
- Comprehensive software tools and SDK

GIG
VISION

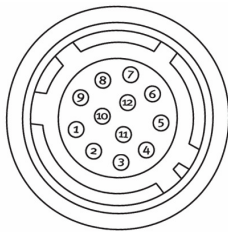
www.GigaLinx.net

GEN<i>CAM

Specifications Of GigE-FCB-BOX

Image Sensor	1/3-type CMOS
Effective Pixels	Approx. 2,000,000 pixels
Lens	10x optical zoom, f=5.1mm to 51.0 mm
Digital zoom	12x (120x with optical zoom)
Angle of view (H)	50° (wide) to 5.4° (tele)
Sync system	Internal
Video output	1080/59.94i, 1080/50i, 720/59.94p, 720/50p
Dynamic Range	50dB
Pixel types	Mono: 8 bits/pixel; Color: 16bit per pixel, YUV4:2:2
Electronic shutter	1/2 to 1/10,000 s, 21 steps
Pre-processing Functions	Auto White balance, Auto Gain, ROI with independent X, Y control, B/W.
GigE Packet Size	1440 to 16,000 bytes
Voltage	+12V DC +-10%
Power	5.5W Typical
Operating Temp.	0°C to 45°C
Storage Temp.	-20°C to 60°C
Ethernet Protocol	10/100/1000 GigE-Vision Standard
Dimensions	69.4mm (W) X 48mm (H) X 78.4 (L)
Weight	~200 g

Power / GPIO Connector Pin-Out

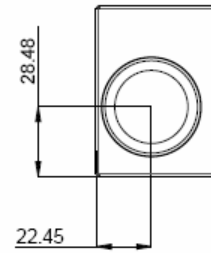


HIROSE HR10A-10R-12PB

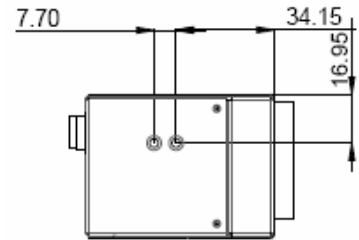
- 1 GND
- 2 GND
- 3 RS232 TX OUT
- 4 I/O OUT1
- 5 I/O OUT2
- 6 I/O OUT VCC
- 7 I/O IN2
- 8 Camera Power
- 9 Camera Power
- 10 I/O IN1
- 11 RS232 RX IN
- 12 I/O IN GND

Dimensions

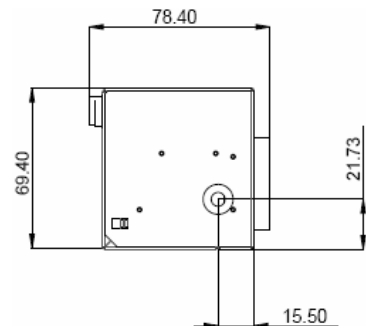
Front view



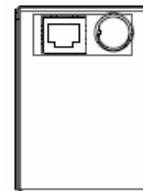
Side view



Bottom view



Back view



Note: For complete spec of SONY FCB-H10/H11 camera modules, please refer to original documentations from SONY

GIG
VISION

GEN<i>i>CAM

Advance Information; Specifications subject to change without prior notice
GigaLinx - 6A Massada St. Hod Hasharon, Israel – www.gigalinx.net